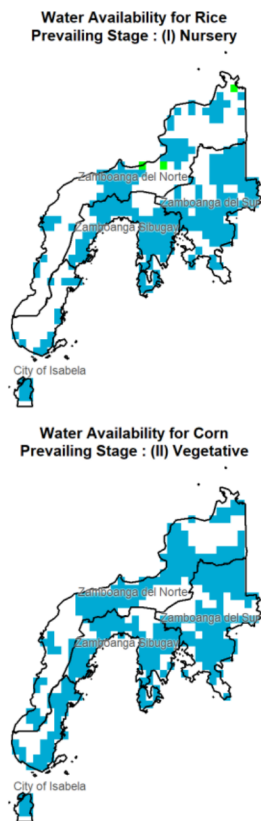


# Region IX (Zamboanga Peninsula)



## Provincial Values

	Mon. Ave. Rainfall (mm)	Rice		Corn	
		CS	CCI (%)	CS	CCI (%)
City of Isabela	434.8	I	664.5	I	810.3
		II	664.5	II	810.3
		III	664.5	III	810.3
		IV	664.5	IV	810.3
Zamboanga del Norte	390.0	I	507.6	I	610.9
		II	502.2	II	572.3
		III	499.7	III	547.7
		IV	529.6	IV	571.1
Zamboanga del Sur	350.9	I	520.9	I	650.0
		II	520.5	II	647.0
		III	520.3	III	644.8
		IV	522.6	IV	646.9
Zamboanga Sibugay	396.1	I	621.6	I	763.6
		II	621.6	II	763.6
		III	621.6	III	763.6
		IV	621.6	IV	763.6

Crop Stage (CS) highlighted in **bold** is the dominant stage during the month of June.

Rice CS:  
(I) Nursery  
(II) Vegetative  
(III) Reproductive  
(IV) Ripening

Corn CS:  
(I) Establishment  
(II) Vegetative  
(III) Reproductive  
(IV) Maturity

CCI Category:  
 Inadequate  
 Sufficient  
 Excess

## Regional Summary

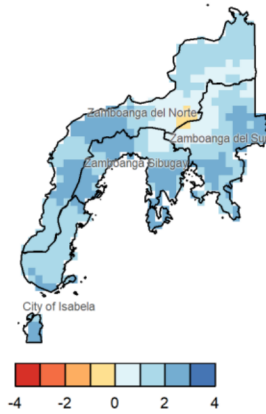
The rainfall received throughout the month was generally excessive, which may impose a potential threat, especially during the prevailing Nursery and Vegetative stages of both rice and corn crops in the region. Meanwhile, the SPEI3 shows near-normal to wetter conditions throughout the region over the last three months.

The extreme rainfall indices reveal 50 to 100 millimeters of one-day highest rainfall (see *RX1day*) and 150 to 200 millimeters of highest consecutive five-day rainfall (see *RX5day*) over the western and southern portion of the region. However, this rainfall amount could be beneficial to standing crops during the Vegetative stage of corn, as well as land preparation for rice crops.

### NDVI

NDVI satellite data not yet available.

### SPEI3 (Apr-May-Jun)



### RX1day



### RX5day

